



System Requirements

EnlightKS Online Certification Management Services
ET2.16 January 2014 (et2-2.15-17, et2-2.16-3).

Creation Date	20 January 2014
Electronic File Name	SystemRequirements_ET2_16-January-2014
Scope	Public

Revision History

Version	Date	Comments
2.16-3	20 January 2014	-

System Requirements

Operating System:

- Microsoft Windows XP/Vista/7/8
- Mac OS X 10.5.x - 10.8.x
- Display resolution of at least 1024x768 pixels with 16k colours.

Supported browsers

Internet Explorer:	Version 7 to 11 .
Firefox:	Latest version.
Google Chrome:	Latest version.
Safari	5.1, 6

Tabbed browsing should be disabled.

Internet Explorer 6 was unsupported in previous versions. Beginning with ET2 2.16-1, Internet Explorer 6 will not work anymore and should not be used with ET2.

Supported Java versions:

Java 7:	Current version. Any Java version that is generally available from Oracle until its stated expiration date, at or above the security baseline.
Java 6:	Not recommended.

Users must be allowed to download files and run signed Java Applets.

Security Baseline: Please refer to the Java Update Release notes,

<http://www.oracle.com/technetwork/java/javase/documentation/index.html>

Internet Connection

Download speed requirements vary with number of users and usage patterns. We recommend no less than **60 Kbit/s per user**, but **at least 500 Kbit/s in total** available capacity.

info@enlightks.com

+44(0)1763 257100

Firewall Settings

ET2 uses http and https. The firewall or proxy must be configured to allow:

- HTTP access (destination TCP port 80, URLs begin with http://).
- HTTPS access (destination TCP port 443, URLs begin with https://).
- DNS lookups (TCP/UDP port 53, check your DNS server address).
- Download of .jar and .bin files must **NOT** be blocked.

Pop-up blocker

If you use a pop-up blocker, pop-up windows must be allowed for *.enlight.net.

info@enlightks.com
+44(0)1763 257100

EnlightKS In-Application

Operating System for In-Application

Microsoft Windows XP/Windows Vista/Windows 7/Windows 8.x

.NET framework

The .NET Framework version 3.5 is required.

The .NET Framework Redistributable Package can be downloaded at:

<http://www.microsoft.com/en-us/download/details.aspx?id=21>

Download link also provided at the "System Requirement Check" page.

Office

In-Application tests are available for the following Office components:

- **Word**,
- **Excel**,
- **PowerPoint**,
- **Access** (Professional and Professional Plus only).

In-Application tests are supported with the following editions of Microsoft Office:

Microsoft Office 2013	Home & Student ² , Home & Business ² , Standard ² , Professional, Professional Plus.
Microsoft Office 2010	Home and Student ² , Home and Business ² , Standard ² , Professional, Professional Plus
Microsoft Office 2007	Basic ¹ , Home and Student ² , Standard ² , Small Business ² , Professional, Ultimate, Professional Plus or Enterprise
Microsoft Office 2003	Basic ¹ , Student and Teacher ² , Standard ² , Small Business ² or Professional.

Note: Windows XP SP3 and Office 2003 Support Ends April 8th 2014.

¹ PowerPoint and Access modules are not available.

² Access module not available.

Note: Office Starter Edition, Office Online and Office 365 are not supported. Office RT is not supported. The latest Service Packs and updates for MS Office should be installed. The most recent available Service Packs for Office (English language versions) are:

Office 2010 Service Pack 1: <http://support.microsoft.com/kb/2460049>

Office 2007 Service Pack 2: <http://office.microsoft.com/en-us/redirect/DC010368157.aspx>

Office 2003 Service Pack 3: <http://office.microsoft.com/en-us/redirect/DC010239378.aspx>

info@enlightks.com

+44(0)1763 257100

Access to workfiles

Work files can be saved either to a virtual drive mapped to the temporary folder (defaults) or to the Documents folder.

- *When using mapped drive (default setting since November 21st 2011):*
 - ☞ The virtual drive will be mapped to the last available drive letter on your system (usually Z:).
 - ☞ A Windows administrator can hide some drive letters by applying a Windows Group Policy ("Hide these specified drives in My Computer"). If the virtual drive is mapped to a hidden drive letter, the virtual drive will not be seen and will thus not function properly. The recommendation is to use the default setting which is to not hide any drives. See <http://support.microsoft.com/kb/231289> for details.
- *When not using mapped drive (old settings):*
 - ☞ The user should be allowed to save files to the Documents folder. ("My Documents" in Windows XP)
 - ☞ The Documents folder should not be shared between multiple users that are using ET2 at the same time.

Access to the Windows Registry

No special settings are needed. The default settings in Windows are adequate.

If registry access for any reason has been restricted, users must be allowed normal read access to the Windows Registry and write access to the Windows Registry areas where the users' settings are stored. Those settings are default in Windows for a non-administrator user.

info@enlightks.com
+44(0)1763 257100

EnlightKS ECDL/ICDL Advanced 2.0 preparation

A number of the EnlightKS ECDL/ICDL Advanced test questions rely on certain features related to language and regional settings. There are also some MS Office application settings that need to be set. The settings below should be used before an ECDL/ICDL Advanced test is started in order to ensure the accuracy of the automated marking.

All ECDL/ICDL Advanced test names have a language suffix (e.g. *Enlight ECDL Advanced 2.0 - AM4 Excel 2010 - Cert. Eng*) that indicates the MS Office language version and Windows regional settings. This is important especially if an ECDL/ICDL Advanced test is used in a different country than it is designed for.

MS Office language versions:

ECDL/ICDL Advanced tests are designed to be used with specific MS Office user interface languages. Test language must match MS Office language.

Test language suffix:	Designed for the following MS Office language:
*Eng	English
*Deu	German
*Fra	French
*Ned	Dutch
*Rom	English

info@enlightks.com
+44(0)1763 257100

Windows Regional and Language settings:

ECDL/ICDL Advanced tests rely on certain formats in Windows Regional and Language settings. Test language must match the formats of the language and country for which the test is designed. The formats are: *Date format, Number format and Measurement system.*

Test language suffix:	Designed for the following Windows Regional and Language setting:	Date format (short)	Number format	Measurement system
Eng	English (United Kingdom)	23/06/2011	123,456,789.00	Metric
US Eng	English (United States)	6/23/2011	123,456,789.00	U.S.
CA Eng	English (Canada)	23/06/2011	123,456,789.00	Metric
CH-Deu	German (Switzerland)	23.06.2011	123'456'789.00	Metric
CH-Fra	French (Switzerland)	23.06.2011	123'456'789.00	Metric
Ned	Dutch (Netherlands)	23-6-2011	123.456.789,00	Metric
Rom	English (United States)	6/23/2011	123,456,789.00	Metric*

info@enlightks.com
+44(0)1763 257100

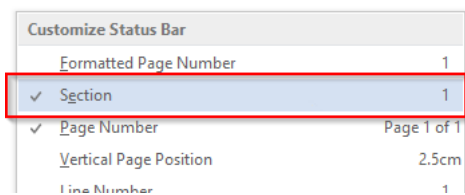
Other MS Office application settings

The following settings in MS Office applications should be completed by the Test Centre prior to an ECDL/ICDL Advanced 2.0 test:

MS Office 2013

User Interface settings for MS Word 2013

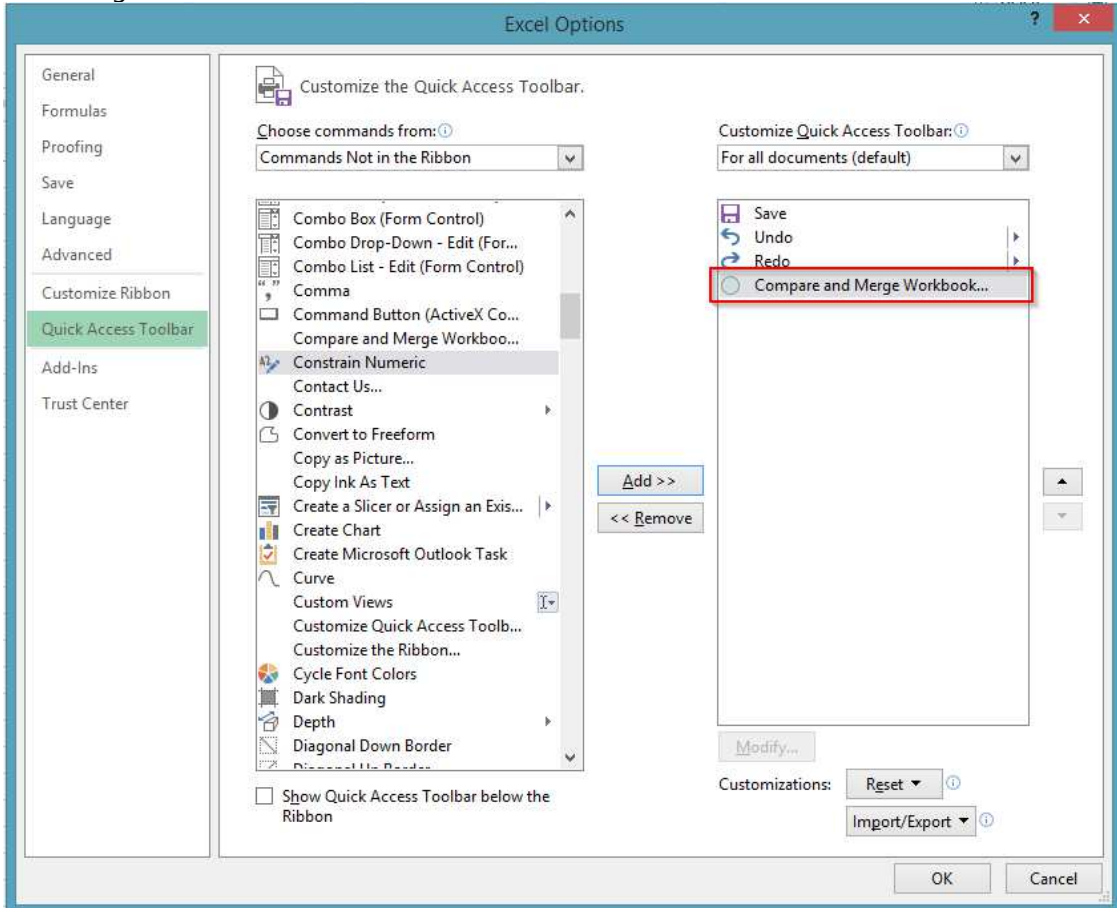
- The Status Bar must display Sections.



info@enlightks.com
+44(0)1763 257100

User Interface settings for MS Excel 2013

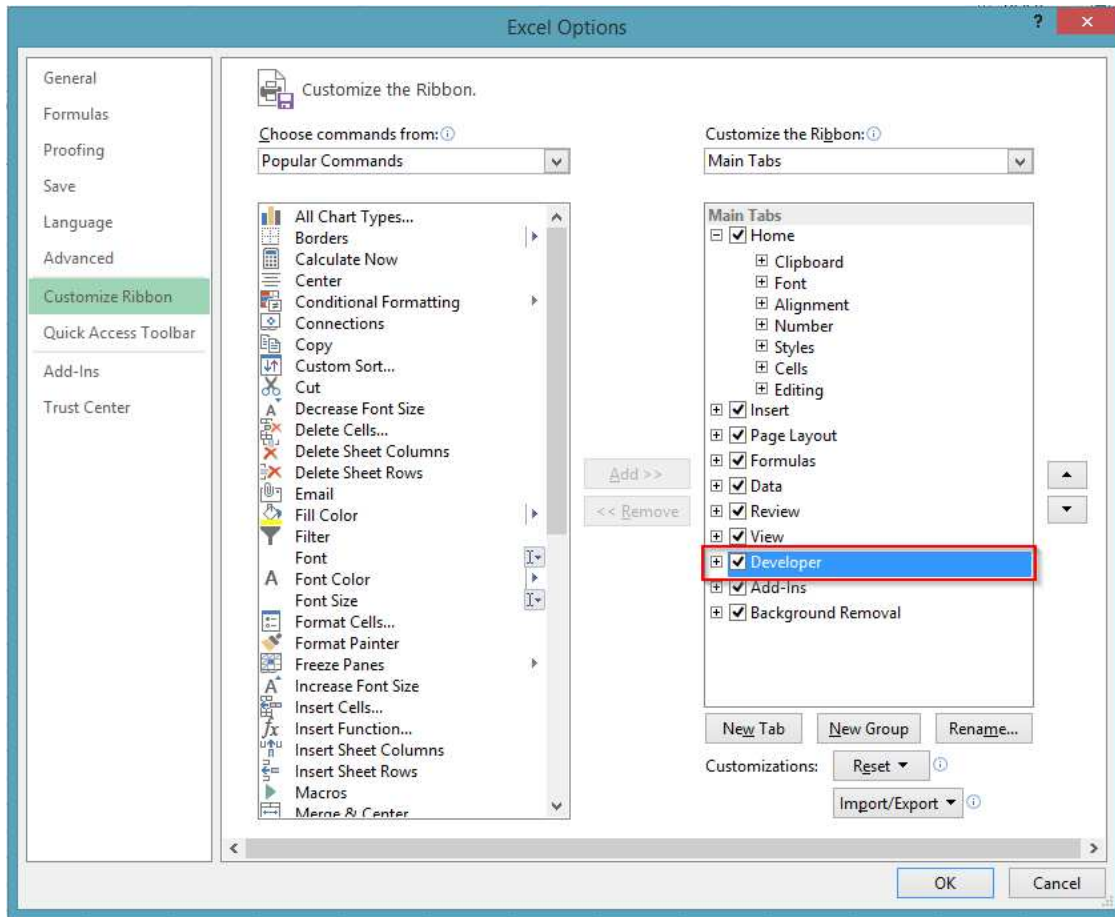
- The Compare and Merge Workbooks icon must be available on the Quick Access toolbar for use during a test.



info@enlightks.com
+44(0)1763 257100

Interface settings MS Word and Excel 2013

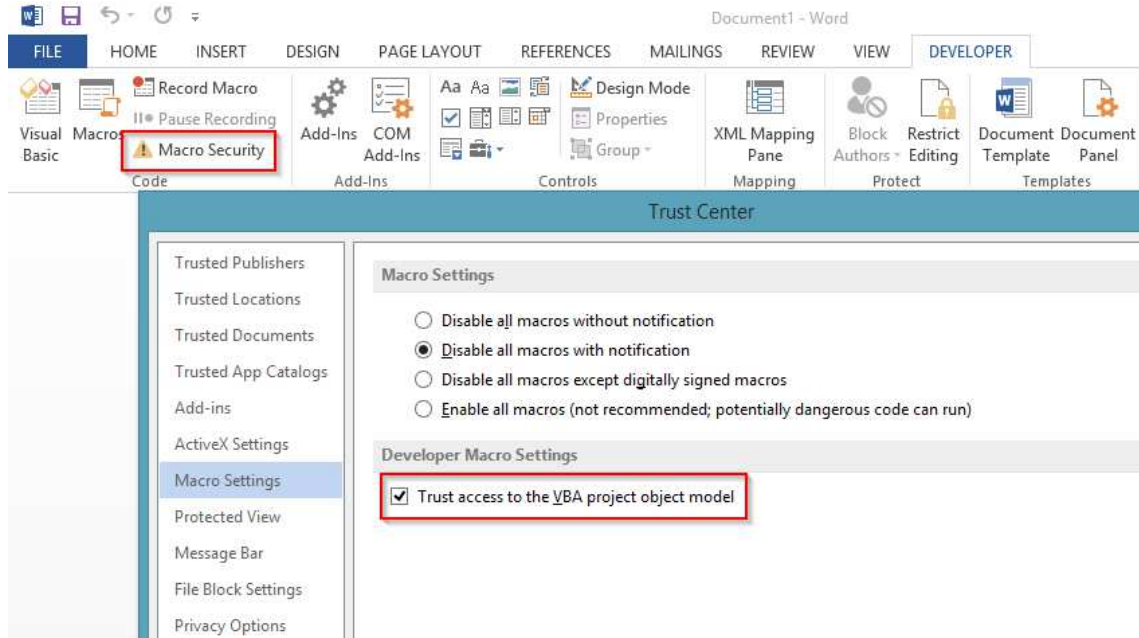
- The Developer tab must be turned on.



info@enlightks.com
+44(0)1763 257100

Macro security settings MS Word, Excel, PowerPoint 2013

- The "Trust access to the Visual Basic project object model" box must be checked.

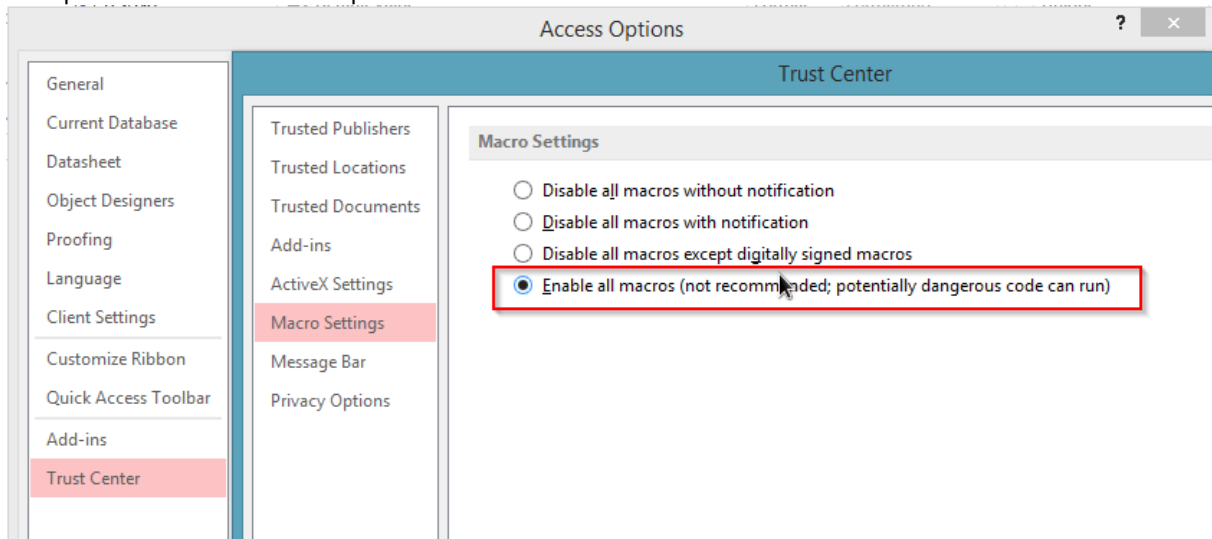


info@enlightks.com
+44(0)1763 257100

Macro security settings MS Access 2013

- Go to File menu->Options->Trust Center.
- Click Trust Center Settings...
- Check "Enable all macros"

Failure to apply this setting will mean that all Database content is not enabled; therefore some questions cannot be completed.

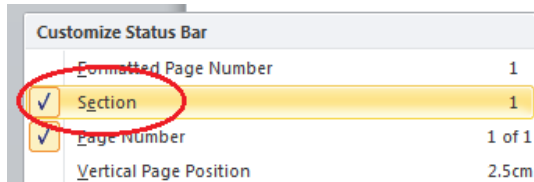


info@enlightks.com
+44(0)1763 257100

MS Office 2010

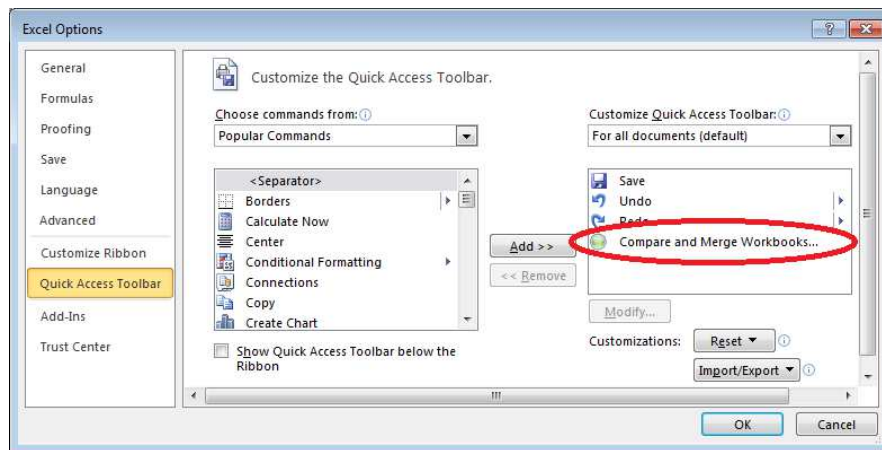
Interface settings MS Word 2010

- The Status Bar must display Sections.



Interface settings MS Excel 2010

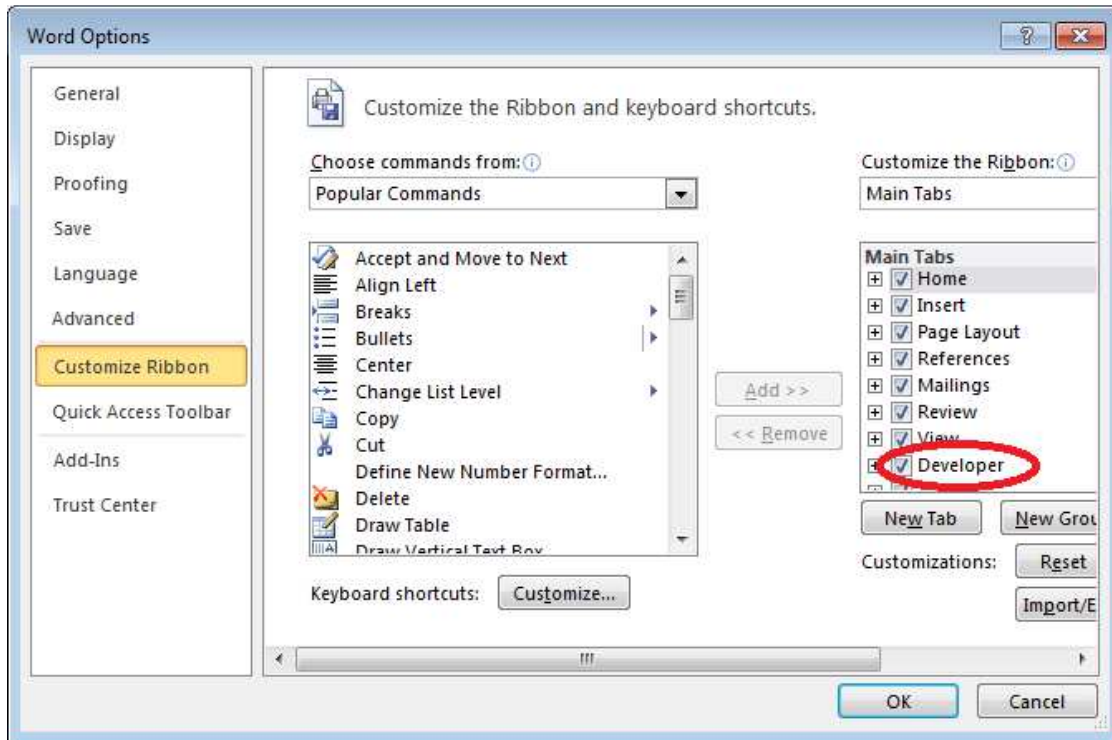
- The Compare and Merge Workbooks icon must be available on the Quick Access toolbar for use during a test.



info@enlightks.com
+44(0)1763 257100

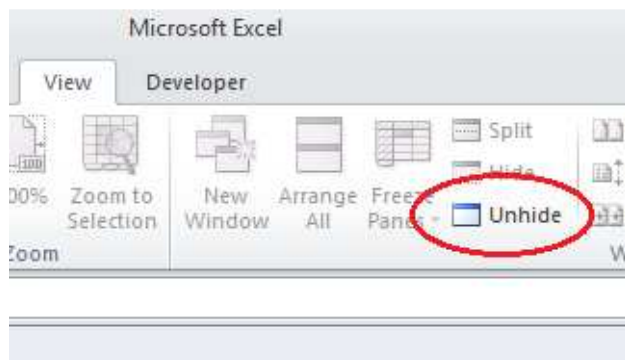
Interface settings MS Word and Excel 2010

- The Developer tab must be turned on.



Display any hidden workbooks in Excel 2010

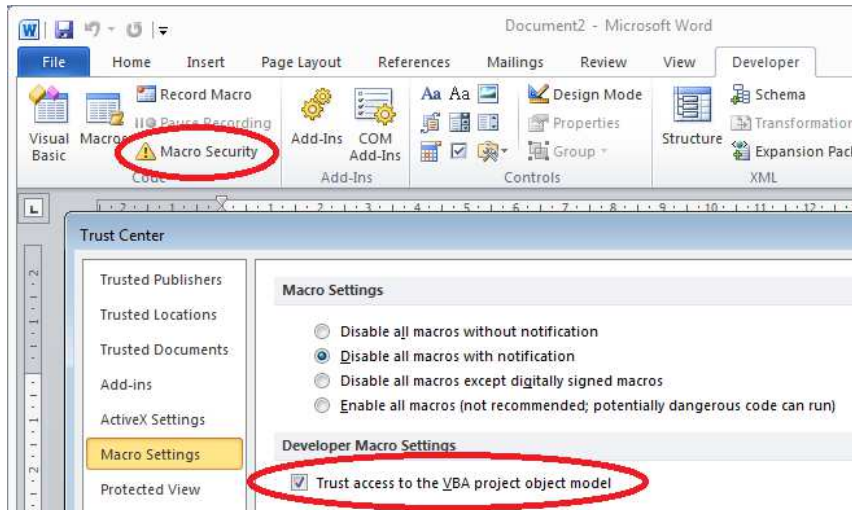
- Hidden workbooks must be displayed by choosing the "Unhide" command on the View tab



info@enlightks.com
+44(0)1763 257100

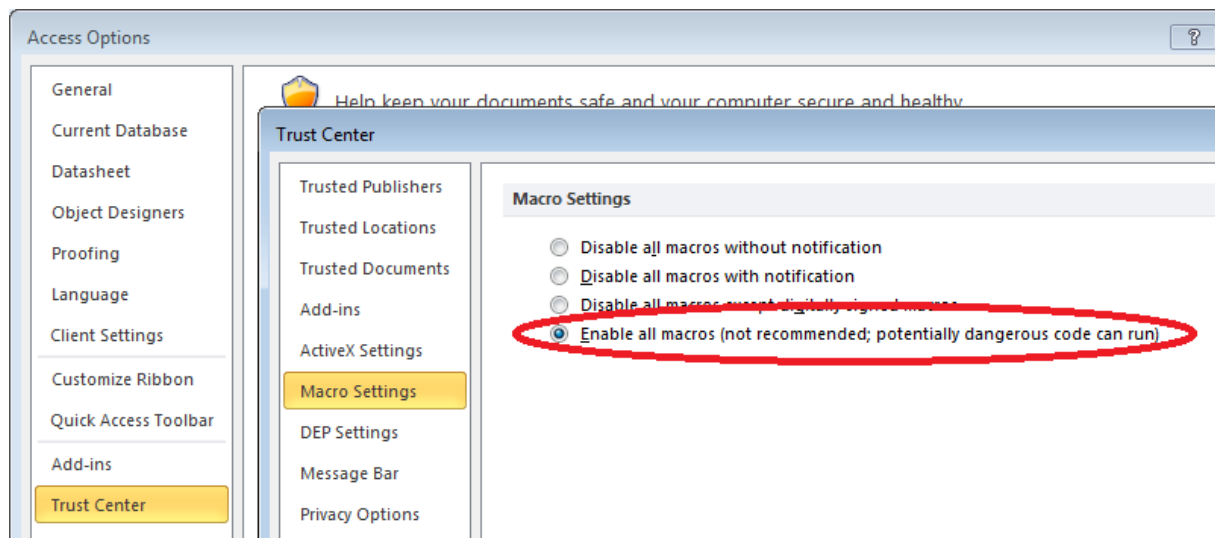
Macro security settings MS Word, Excel, PowerPoint 2010

- The "Trust access to the Visual Basic project object model" box must be checked.



Macro security settings MS Access 2010

- File menu, Access Options, Trust Center, Trust Center Settings..., Macro Settings, Enable all macros. Failure to apply this setting will mean that all Database content is not enabled; therefore some questions cannot be completed.

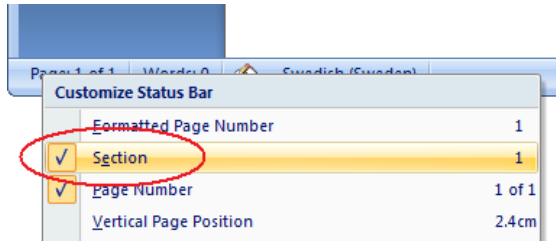


info@enlightks.com
+44(0)1763 257100

MS Office 2007

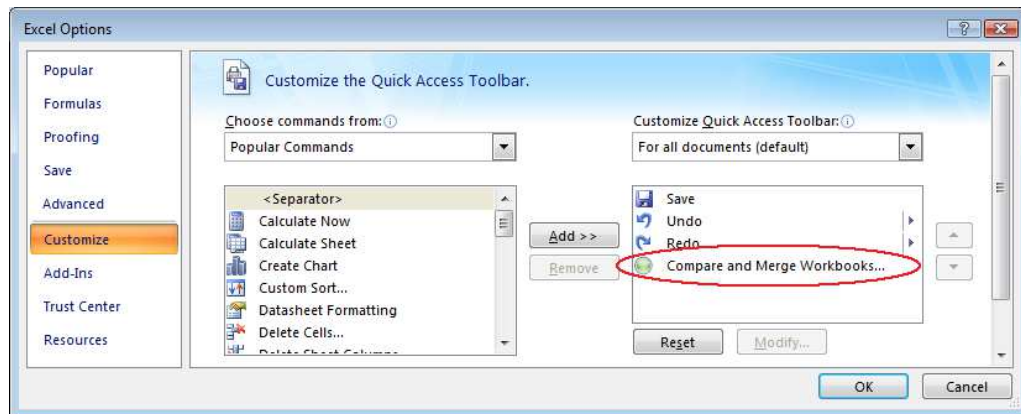
Interface settings MS Word 2007

- The Status Bar must display Sections.



Interface settings MS Excel 2007

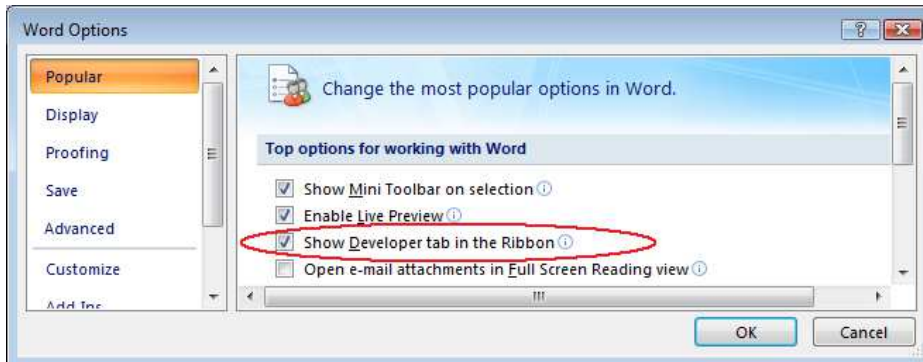
- The Compare and Merge Workbooks icon must be available on the Quick Access toolbar for use during a test.



info@enlightks.com
+44(0)1763 257100

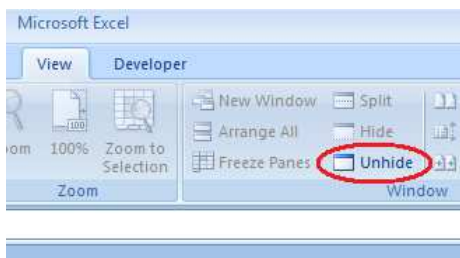
Interface settings MS Word and Excel 2007

- The Developer tab must be turned on.



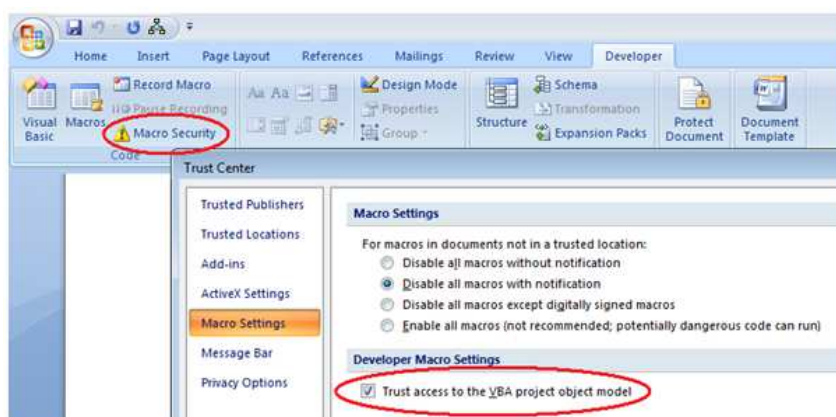
Display any hidden workbooks in MS Excel 2007

- Any hidden workbooks must be displayed by choosing the "Unhide" command on the View tab.



Macro security settings MS Word, Excel, PPT 2007

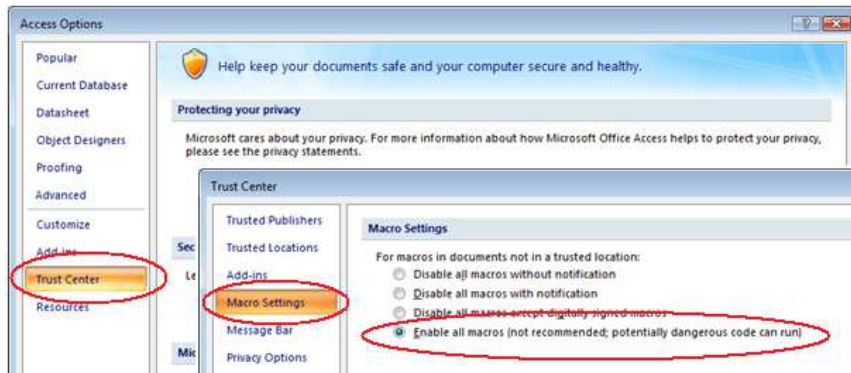
- The "Trust access to the Visual Basic project object model" box must be checked.



info@enlightks.com
+44(0)1763 257100

Macro security settings MS Access 2007

- Office Button, Access Options, Trust Center, Trust Center Settings..., Macro Settings, Enable all macros. Failure to apply this setting will mean that all Database content is not enabled; therefore some questions cannot be completed.

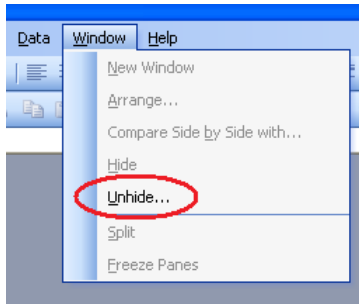


info@enlightks.com
+44(0)1763 257100

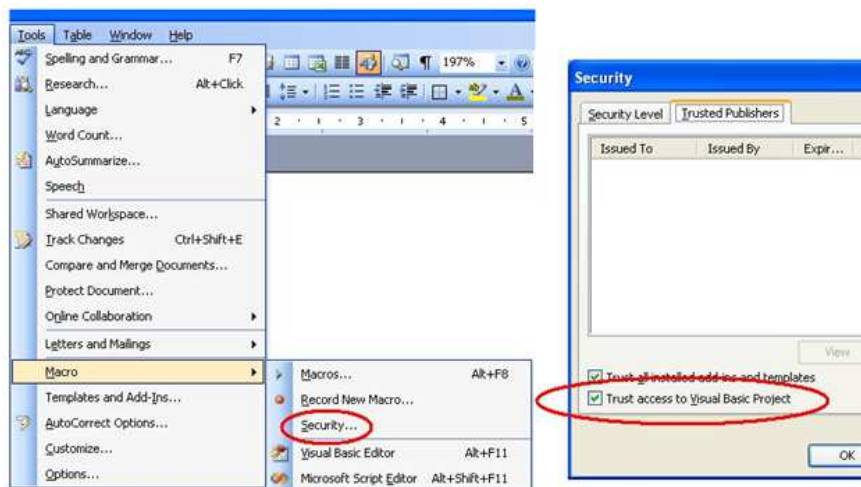
MS Office 2003

Display any hidden workbooks in MS Excel 2003

- Hidden workbooks must be displayed by choosing the “Unhide” command on the Window menu.

**Macro security settings MS Word, Excel, PPT 2003**

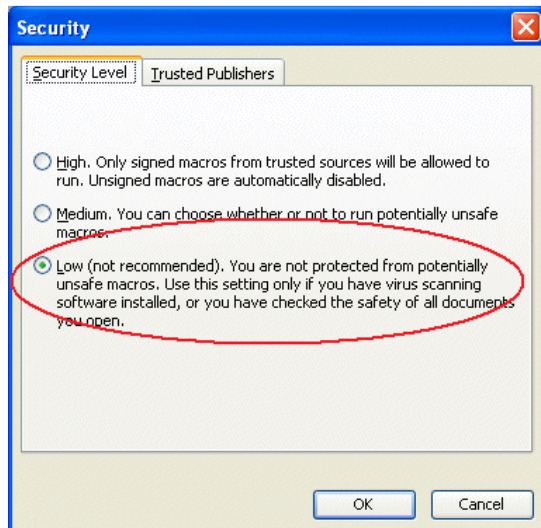
- The “Trust access to Visual Basic project” box must be checked.



info@enlightks.com
+44(0)1763 257100

Macro security settings MS Access 2003

- The security level should be set to "Low" to avoid warning messages when work files are opened.



info@enlightks.com
+44(0)1763 257100

General

The ECDL Foundation has provided and virus checked the MS Office work files used in the EnlightKS ECDL/ICDL Advanced 2.0 tests. Nonetheless Test Centres are advised to use updated anti-virus software on Candidate machines. If you have questions or want more information, please let us know. You may contact our support at support@enlightks.com or visit our website at www.enlightks.com. Your feedback is vital to us.

info@enlightks.com
+44(0)1763 257100